

RXC14 SERIES

High Voltage Contactors

150A CONTINUOUS DUTY

900V SYSTEM VOLTAGE



FEATURES

SPST Normally Open High Voltage Contactors

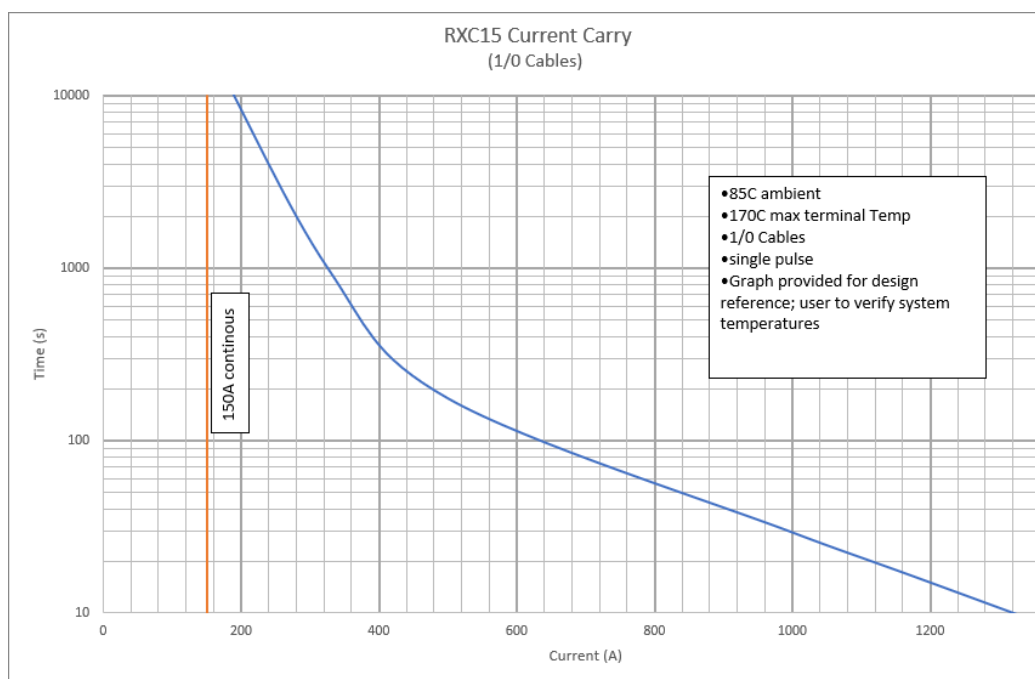
- Hermetic seal with gas fill
- High temperature performance
- Meets RoHS 2011/65/EU
- CE certified
- IEC60947-5-1 compliant



PERFORMANCE

TABLE 1. SPECIFICATIONS

CHARACTERISTIC		MEASURE		
Contact Arrangement		Form X, SPST NO		
Max Switching Voltage		900 VDC		
Dielectric Withstand Voltage Contacts to Coil		2,200 VAC, 1 minute		
Dielectric Withstand Voltage Across Open Contacts		4,000 VDC, 1 minute		
Continuous Current (53mm ² conductor)		150A		
Overload Current	30 seconds	1000A		
	3 Minutes	400A		
Make and Break		See table		
Max Short Circuit Current -1 second		1,500 A		
Min Insulation Resistance		1,000 Mohm @ 1,000V		
Contact Voltage Drop (Max)		80mV @ 100A		
Operate Time (Max, incl bounce)		25ms		
Release Time (Max)		10ms		
Shock - Functional, 1/2 Sine, 11ms		20G		
Shock – Destructive, 1/2 Sine, 11ms		50G		
Operating Temperature		-40°C to 85°C		
Ingress Protection		Exceeds IP69, (Hermetically sealed)		
Mechanical life		300,000		
AUXILIARY CONTACTS		MEASURE		
Contact Arrangement		SPST		
Continuous Current		2A		
Minimum Current		100mA @ 8V		
COIL @ 20°C		MEASURE		
Nominal Voltage		12V	24V	48V
Pick-up Voltage (Max)		8.5 VDC	17.0 VDC	38.4 VDC
Drop-out Voltage (Min)		0.6 VDC	0.9 VDC	3.3 VDC
Holding Current		0.46A	0.25A	0.12A
Coil Resistance +/- 5%		26Ω	100Ω	392Ω
Coil Power		5.5W	5.8W	6W


TABLE 2. RESISTIVE LOAD SWITCHING (MAKE / BREAK DATA)

POLARITY SENSITIVE VERSION		CYCLES (1 cycle = 1 make + 1 break)
VOLTAGE	CURRENT	
750V	20A	20,000
750V	100A	1,000
750V	300A	2
900V	100A	100
450V	100A	7,500

OPTIONS

TABLE 3. PRODUCT NOMENCLATURE

		MOUNTING	COIL	AUXILIARY CONTACTS
RXC14	P Polarity Sensitive	1 Bottom Mount	A 12V single coil	X None
			B 24V single coil	
			C 48V single coil	

PRODUCT DIMENSIONS [mm]

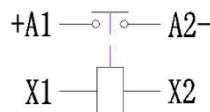
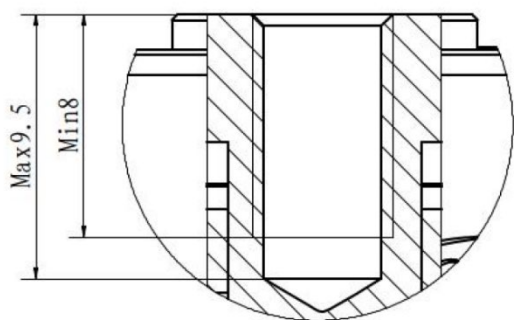
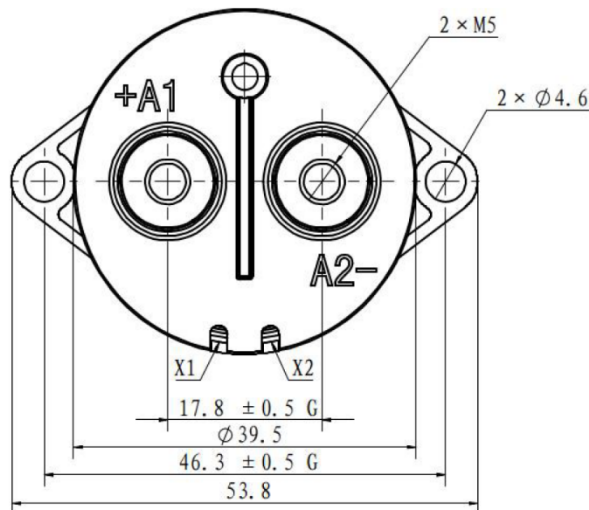
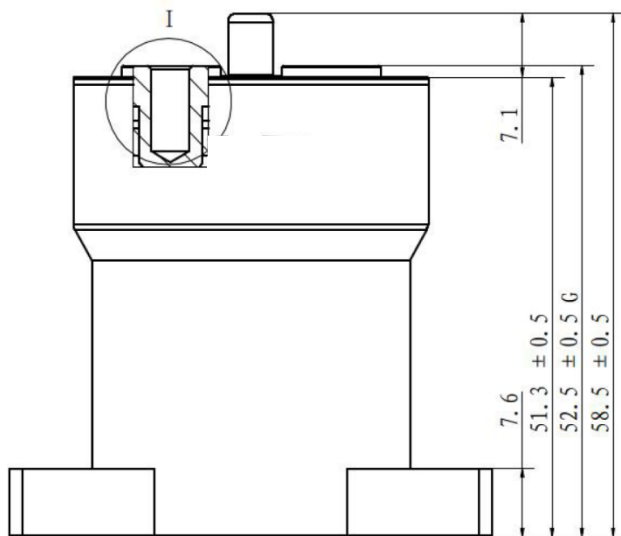


TABLE 4. DIMENSIONAL AND INSTALLATION

CHARACTERISTIC	MEASURE
Weight	185g (0.41 lb)
Mounting Position	Any / Not Position Sensitive
Package Quantity	30
Install Torque	3-4Nm (26-36 in-lb)
M5 Main Terminals	

NOTES

- Polarity Sensitive versions are marked +A1 and -A2 for the power terminals. For applications that require the contactor under load, please ensure current is flowing from the +A1 to the -A2 terminal when breaking/opening under load For Bi-Directional versions the direction of current does not matter when breaking under load
- Attached cables and busbars directly to the main terminal pad using the recommended install torque. Do not use washers or other materials between the contactor and the conductor. This will ensure the lowest possible contact resistance
- Avoid excessive coil voltages. Exceeding the ratings on the datasheet may result in high coil temperature and coil failure
- Contactor may be used above Max Switching Voltage if the application does not require significant load breaking. Please contact Rincon Power to discuss in more detail